

SHARE-CZ

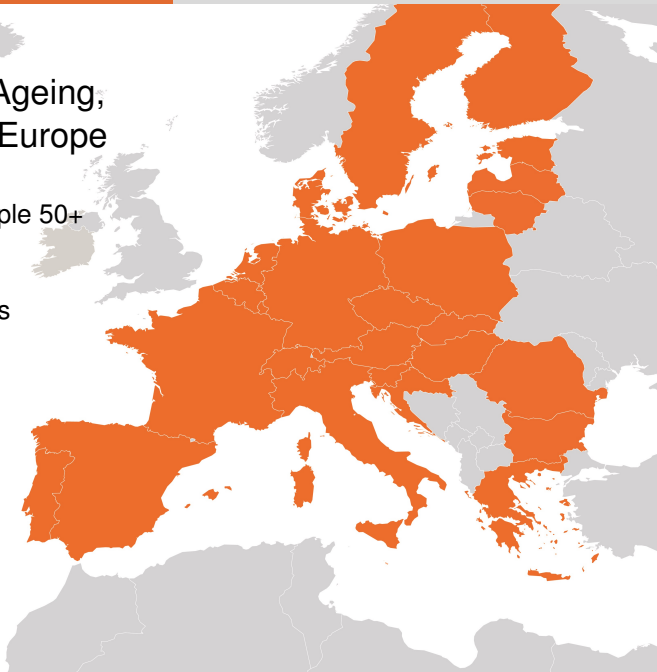
NIA Biomarker Network

Radim Boháček and Vojtěch Illner
CERGE-EI

April 2025

Survey of Health, Ageing, and Retirement in Europe

- ▶ Representative sample 50+
- ▶ 600,000 interviews
- ▶ 140,000 respondents
- ▶ 20,000 users
- ▶ Cross-national
- ▶ Harmonized
- ▶ Multidisciplinary
- ▶ Panel: 10 waves

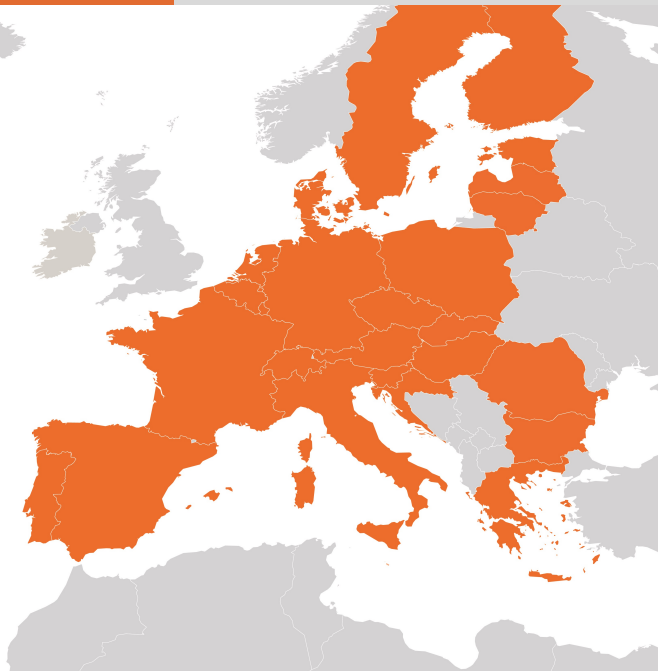


SHARE-CZ

- ▶ Czech Republic
- ▶ Since 2006
- ▶ 10 waves
- ▶ 5,000 sample

Agenda

- ▶ Link
- ▶ Harmonize
- ▶ Measure
- ▶ Innovate

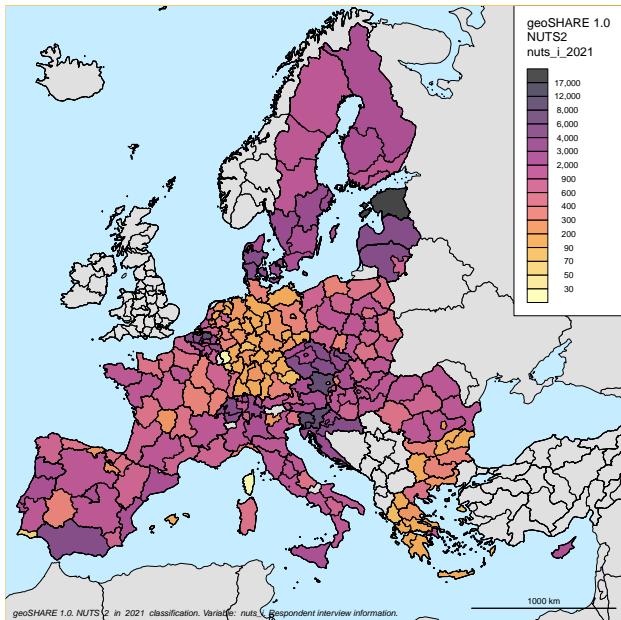


linkSHARE to Administrative Data

- ▶ Pensions
- ▶ Earnings
- ▶ Social benefits (health care, housing, children)
- ▶ Health (all individual treatments, DG, medication)
- ▶ Death certificates
- ▶ Birth information
- ▶ Respondent consent in wave 11

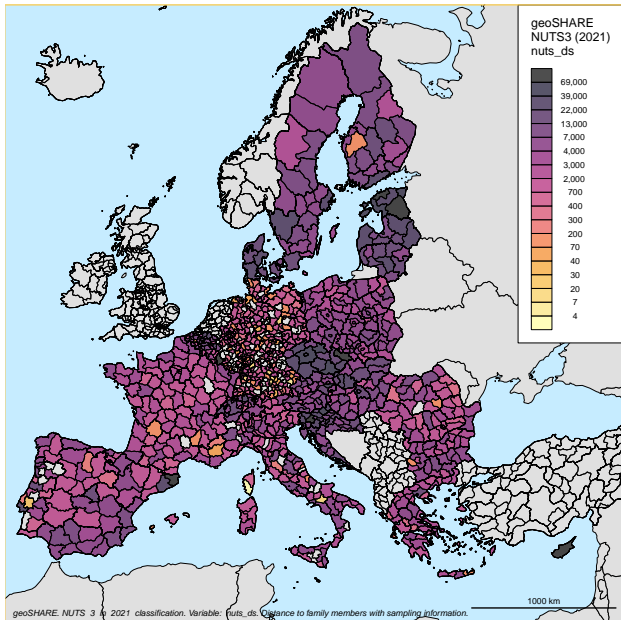
geoSHARE

- ▶ Wave 1-9
geographic location
- ▶ NUTS 1-3
- ▶ Municipality
Postal codes
- ▶ Data access
- ▶ Legal & technical solution



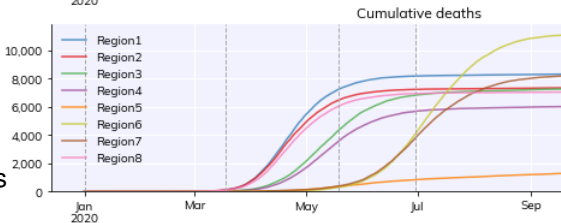
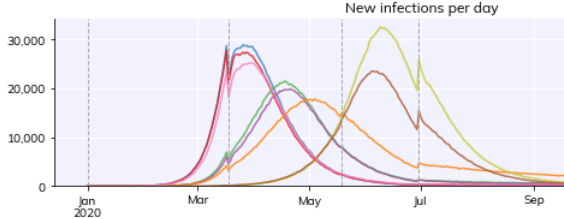
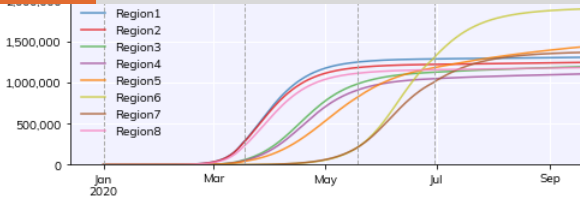
geoSHARE HEP

- ▶ Life history
- ▶ Wave information
- ▶ Improved:
moving, distance
to children and
parents
- ▶ Respondent
& Household
Episode Panel
- ▶ NUTS 1-3
- ▶ Parent birthplace



abmSHARE

- ▶ Agent based model
- ▶ Epidemiology
- ▶ Layers
 - ▶ Household
 - ▶ Workplace
 - ▶ School
- ▶ Covid-19
 - ▶ variants
 - ▶ vaccination
- ▶ Covasim in space
- ▶ Country and regional policies



bioSHARE Biomarkers

- ▶ Objective measurements
- ▶ Venous blood samples
- ▶ Harmonize with HRS
- ▶ RECETOX Laboratories in wave 11

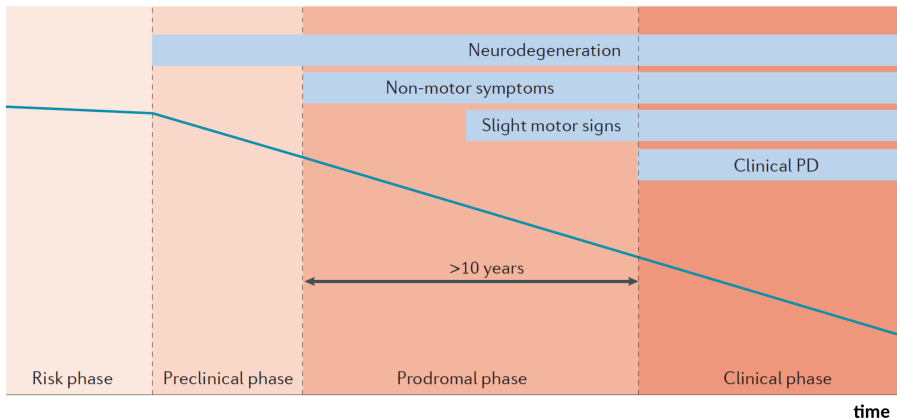
expoSHARE Exposomes

- ▶ Internal and External
- ▶ Short- and long-term cumulative environmental exposure
- ▶ Relate outcome measures to heterogeneous environment
- ▶ RECETOX Laboratories as EIRENE-ERIC

SHARE HCAP

- ▶ Human Cognition Assessment Protocol
- ▶ HCAP1 in wave 9 (CZ, DE, DK, FR, IT)
- ▶ Dementia prevalence and imputations
- ▶ Harmonized with HRS
- ▶ HCAP2

neuroSHARE

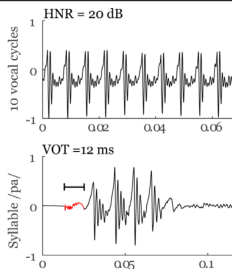


- ▶ Early markers for neurodegenerative diseases: Prodromal phase
- ▶ Parkinson's and Alzheimer's disease
- ▶ Dementia with Lewy bodies
- ▶ CZ in wave 10, CH in wave 11

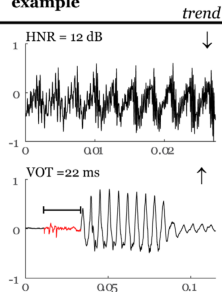
neuroSHARE

- ▶ Clinics to Survey
- ▶ Three tests
 - ▶ Speech test
 - ▶ Standardized olfactory test
 - ▶ Sleep test (REM behavior disorder)
- ▶ Clinical examination (5%)
- ▶ Combination of tests
- ▶ Plan: Self-administered New measures

Healthy speech example



Hypokinetic dysarthria example



SHARE-CZ

- ▶ Leverage international comparability of SHARE data
- ▶ Harmonization with HRS, ELSA, other surveys
- ▶ Gateway to Global Aging Data
- ▶ Gateway Exposome Coordinating Center (GECC)
- ▶ Build better health and socio-economic measures
- ▶ Pilot new projects